

Design Challenge

SHOWN: **BISYMMETRIC CUT**

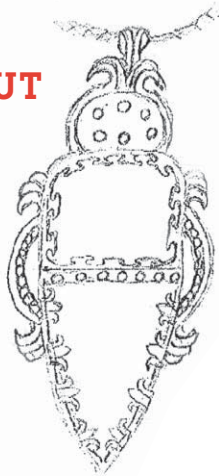
We asked you to create a setting for a tanzanite/tsavorite garnet pair cut by Stephen M. Avery.



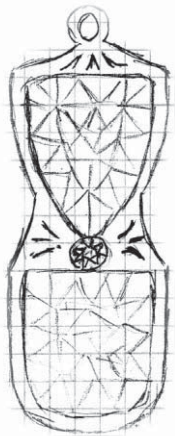
Shevvy Baker
Louisville, Kentucky



Bryan M Dunkel
Circleville, Ohio



Patricia Stamps
Grand Rapids, Minnesota



Mark S. Rokier
Clifton Park, New York



Cathy White
Kent, Ohio

Sally Franko
Mississauga,
Ontario



LETTERS



RE: **Phototransfer Copper Etching, June 2010**

I had been researching acid etching for the past few days, trying to figure out the process without much success (didn't have a laser printer for photo transfer, iron has an automatic shut off, confusion on different acid formulas, etc. . .). I picked up the mail yesterday and found my newest edition of *Lapidary Journal Jewelry Artist*, browsing through the magazine amidst all of my etching research, and lo and behold . . . there was your article!

I immediately read the article and sucked it up with gusto, to find all of the missing pieces that I needed to finally attempt acid etching. While my research online and in my personal library discovered several articles on acid etching, none of them gave enough details (i.e., ink jet printers don't work for transfer, use of Sharpie pen, trick with blue painters tape, etc.)

Thank you for the demonstration article, maybe now I can successfully try this.

Jan Bennett
KINGSHILL, VIRGIN ISLANDS

! take your turn

Next Design Challenge: **FLOW**

Show us something fluid

DEADLINE: SEPTEMBER 30

E-mail digital scans at 300 DPI or send photocopies of no more than three sketches with your name, city, and state. Sketches will not be returned; some may be published.

Write to Us

Tell us what you think about

Lapidary Journal Jewelry Artist

Send your sketches and comments to HDriggs@Interweave.com; 610-232-5756 (fax) or *Lapidary Journal Jewelry Artist*, 300 Chesterfield Parkway, Suite 100, Malvern, PA 19355. Please indicate "Design Challenge" or "Letters" as appropriate on the subject line or envelope.